

Light news

Dear Reader,

Louis Poulsen is proud to introduce a number of new products. You may already have noticed a few of them in the catalog, particularly those using LEDs.

Our focus has been to add an LED option to many of our existing products. Louis Poulsen continues to follow a decades old tradition of re-launching iconic fixtures with a technical update. Their design still proves adaptability to present architecture and surroundings due to their simplicity and product quality.

We update our products to LED by following our product philosophy of performance, comfort and atmosphere. When Louis Poulsen launches LED products we do not do it just for the sake of using LEDs, but for using new lighting technology as a solution to maintain the comfort and atmosphere in a modern way.

The catalog also features two brand new products designed by Foster + Partners. The F+P Wall and F+P Post Top constitute a family of products that can be used together.

We also have the pleasure of introducing a new design group called KiBiSi. The group members are the world famous architect Bjarke Ingels, designer Lars Larsen who has designed everything from sofas to earphones, and finally, Jens Martin Skibsted, who works mainly with branding and communication. The result is a luminaire called Silverback, familiar at first sight but completely different, where structure, color and material of the room morphs into the product.

Louise Campbell has done it again! A new pendant that supplies space with atmospheric light ... strong and robust, but feminine and beautiful, the LC Shutters can be specified both for commercial and residential interiors.

We hope this newsletter inspires you to visit our website and find out about these new and exciting products.

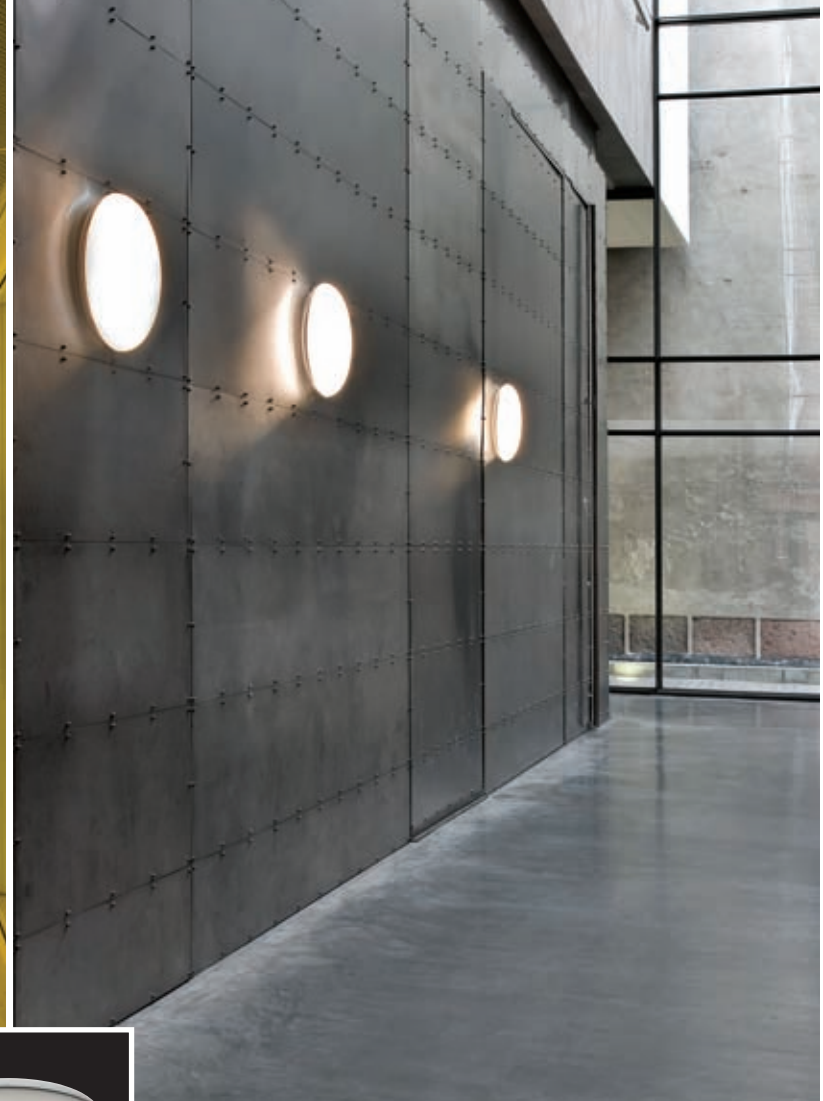


Best regards

Kent Stilling Pedersen
President

**louis
poulsen**

www.louispoulsen.com



Design: KiBiSi

SILVERBACK

SILVERBACK fuses light source and luminaire into a single unified object with two complementing material qualities – a translucent light diffusing front merged with a silver back. The reflecting material mirrors the surface of the wall adapting to the surroundings like a chameleon blending in to its environment.

The front curvature of the product and the efficient diffuse material ensures a widespread and uniform light.

A soft halo of light is spread on the mounting surface through the semi-metallised material on the upper part. This creates a beautiful glow around the product,

minimizing the contrast and avoiding discomfort glare.

Finish: White opal and metallized. Materials: Housing: Die-stamped steel sheet. Diffuser: Opal acrylic and semi-metallized polycarbonate. Light source: 1/22W/1/40W T5 2GX13.



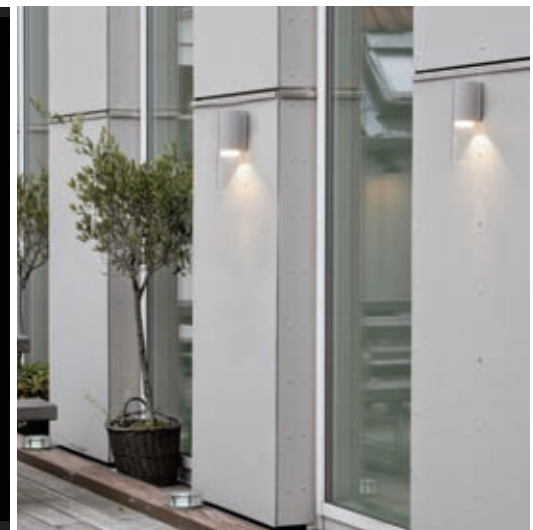
Design: Foster+Partners

F+P POST TOP

As a result of Louis Poulsen's successful cooperation with Foster+Partners we are launching a brand new and different outdoor post – F+P POST TOP LED.

The design is simple: an aluminium or graphite grey cylinder is enclosed by a clear cylinder. Together, they create a subdued, downward directed light which makes it comfortable to look at both close-up and from a distance. F+P POST TOP's minimal design makes it visually neutral and ideal for parks, pathways and residential areas comfortably and discreetly.

Finish: Natural painted aluminum or graphite grey, powder coated. **Material:** Housing: Die cast aluminum. Enclosure: Extruded clear acrylic with polished edges. Light source: 57W LED/3000K, 57W LED/4000K.

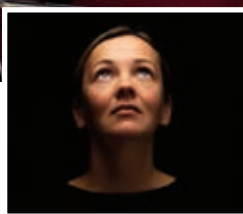


F+P WALL LED

F+P WALL LED, in the same style is a discreet and simple wall light which is suitable for a wide range of applications. Stairways, corridors, bathrooms, entrances and outdoor areas. F+P WALL LED is ideal for repetitive installations, and also has enough character to be used by itself.

F+P WALL LED provides direct downward light, making it ideal for accentuating lighting.

Finish: White, natural painted aluminum or graphite grey, powder coated. **Material:** Housing: Die cast aluminum. Enclosure: Extruded clear acrylic with polished edges. Light source: 7W LED/3000K, 7W LED/4000K.



Design: Louise Campbell

Finish: White, powder coated. White, powder coated with colored films.
Material: Spun aluminum. Punched and embossed.
Suspension: die cast aluminum. Diffuser ball: Rotation molded PE Plastic.
Light source: 1/42W/CF GU24

LC SHUTTERS

Louis Poulsen and Louise Campbell proudly present the fourth product from the Design Studio of Louise Campbell. The pendant is made from one piece of aluminium where the pattern is embossed in the material giving the shade a two-layer surface. LC SHUTTERS emits light through the fine and beautiful pattern of the shade. An internal opalized diffuser provides 100% glare-free light, and gives the impression of a lighted cupola.

The light of LC SHUTTERS is defined as soft and diffused, providing a pleasant and comfortable light. Light creates atmosphere – a good start for a good conversation.



Design: Ross Lovegrove



AEROS – A WHITER SHADE OF LIGHT

The AEROS is now available in a white version. Besides adding a special atmosphere to a space, this spectacular pendant also supplies a mysterious, but functional light. AEROS is especially attractive in areas where comfort and ambiance is most important, i.e. hotels, restaurants and bars. The organic Fibonacci patterned reflector delivers a uniquely intimate and beautiful light

distribution. With a low position/mounting height, AEROS defines the private zone of the guests and creates mindfulness.

Finish: White, Wet painted. Golden Sand, Wet painted. Material: Canopy: Spun aluminium. Wire connector: Turned aluminium. Shades: Deep drawn aluminium. Diffuser: Acrylic satin. Light source: 1/39W/CMH/T4.5 G8.5, 1/75W/Halogen/T-4 GY6.35.



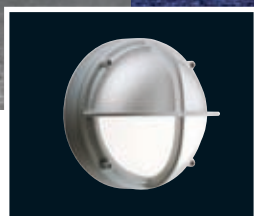


Design: C. J. Nørgaard & P. Hougaard Nielsen

BALLERUP

The Ballerup luminaire's characteristic white opal glass cylinder now has a fresh new look. The intense and even light emitted by the LED gives the opal glass cylinder an amazing luminosity—enabling an unprecedented uniformity throughout its length, while highlighting the sharpness of its design. The luminaire retains its characteristic up-lighting effect, decoratively casting soft ambient light onto the ceiling. Both the Ballerup and the Ballerup Micro transform a ceiling into a decorative element while performing their function beautifully. Simply put, this product has been given a new lease of life.

Finish: White, powder coated. White opal glass. Material: Diffuser: Handblown white opal glass. Housing: Spun steel. Ballerup is available with a 17W LED (3000K and 4000K). Ballerup Micro is available with a 16W LED (3000K and 4000K).



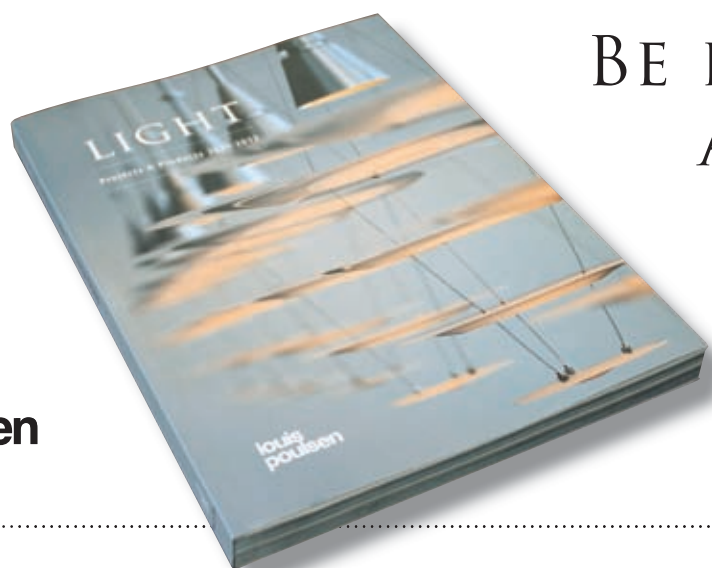
Design: LK as

SKOT LED

The world famous maritime inspired SKOT wall light is now available in an LED version. This unique product is embracing the future, updated to the latest lighting technology, with a timeless design – year in and year out. This classic original retains its adaptability and relevance to all forms of architecture, both new and

old. The rugged design makes SKOT suitable for tough or vandalism-prone environments, as well as more peaceful settings.

Finish: Natural painted aluminum or silver, powder coated. Material: Diffuser: Injection molded white opal polycarbonate. Base/cross guard: Die cast aluminum. Light source: 15W LED 3000K/15W LED 4000K.



**louis
poulsen**

BE INSPIRED BY PROJECTS FROM ALL OVER THE WORLD

Request a copy of our printed catalog by sending an e-mail with your name, title, company, address, e-mail address and telephone number to info@louis Poulsen.com

Targetti Poulsen USA Inc. · 3260 Meridian Parkway · Fort Lauderdale, FL 33331
PH: (954) 349 2525 · info@louis Poulsen.com · www.louis Poulsen.com